



TRAFFIC

***JSENT Traffic** is a South African developed system designed for traffic control rooms. It has been deployed in the major centres in SA. It addresses both the traffic control and traffic management aspects. Traffic control features include traffic light control and optimization. Traffic management features include variable message sign control, incident detection and response.*

***JSENT Traffic** is built on the **JSENT SCADA** system and inherits the standard SCADA features such as multi-user workstations, mimic diagrams, alarm lists, historical event recording and security. See www.jsent.co.za for the list of **JSENT SCADA** features.*

***JSENT Traffic** is ideal for integrating disparate sub-systems into a common user interface with common display, logging, alarming and configuration.*

NTCIP

JSENT Traffic fully embraces the NTCIP standards while also integrating non NTCIP devices. This provides the best of both worlds, conformance with NTCIP devices and the flexibility to use legacy or lower cost non-NTCIP devices.

VMS

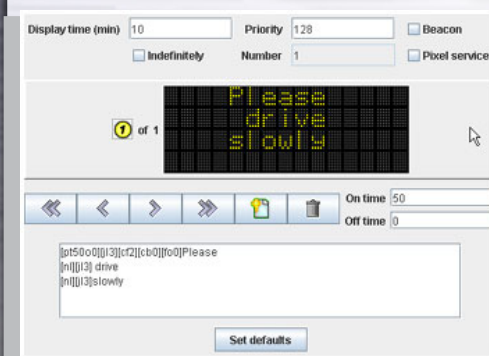
Variable Message Signs that conform to the NTCIP standard and associated message libraries are supported. Messages are created with a WYSIWYG editor which includes support for the MULTI fields and codes. Messages can be activated either manually, by the scheduler, from datascript, or when a set of predefined conditions are detected. Map mimics display the current



message and sign status. A library of pre-configured signs can be created.

TRAFFIC SENSORS

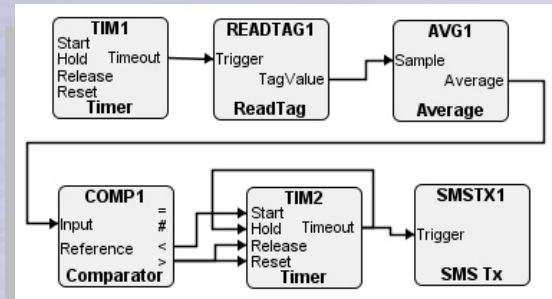
NTCIP and other detectors, such as Modbus based, are supported. Speed, volume and occupancy data from these detectors can be displayed, archived, charted and used in incident detection.



This innovative feature of *JSENT* allows an end user to create custom behaviour, usually for

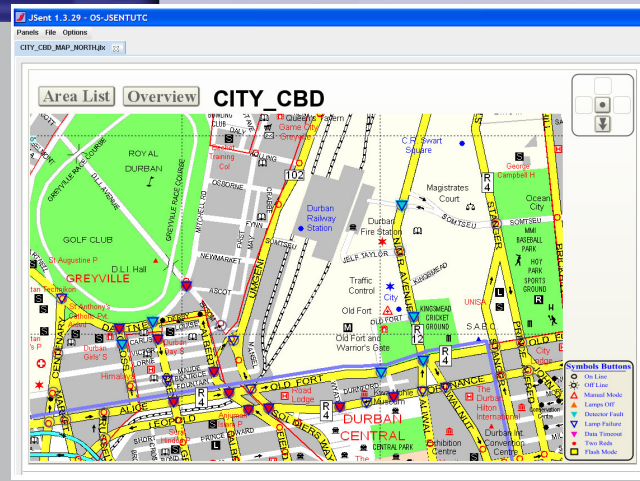
- Incident detection and management
- Standard operating procedures.

Scripts are created by simply placing processing blocks and connecting them visually. Numerous block types are available, from arithmetic to counters, comparators, SMS send and receive and sign control.



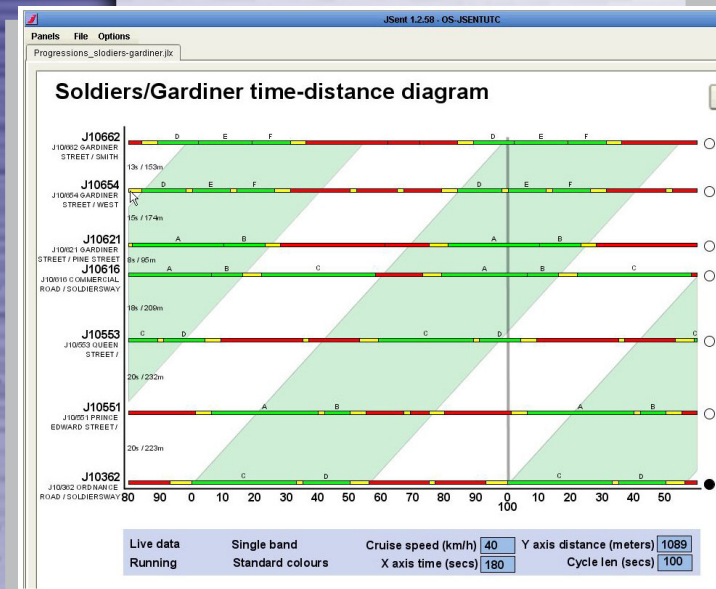
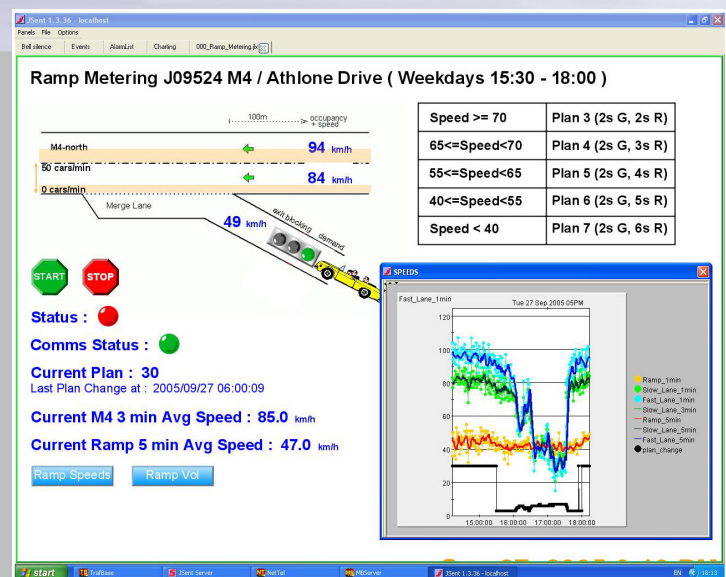
UTC/RMS CONTROL

JSENT can control and monitor both UTC and RMS traffic controllers. It can interface to a SCOOT system to extract counts, events, alarms and other real time data from the SCOOT system.



RAMP METERING

JSENT can control the traffic flow onto freeway ramps. Comprehensive information is displayed for tuning the algorithm.



LINK OFFSET DIAGRAMS

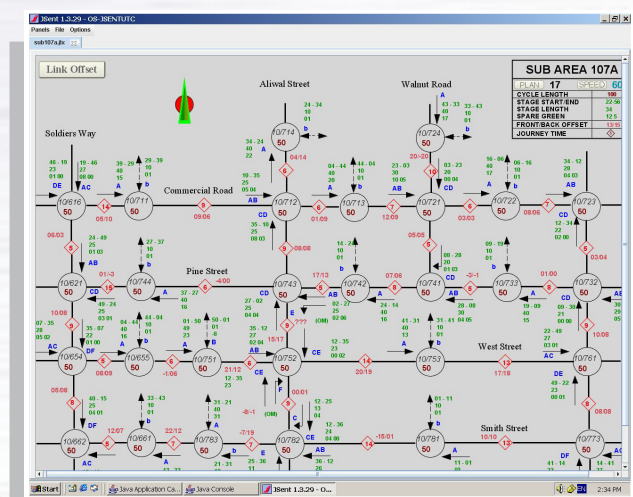
Link offset diagrams can be displayed where the displayed information is automatically calculated for specified plans and traffic speeds.

SGPRS

Standard GPRS may use the public internet for part of its data path. Secure GPRS is a reprogrammed GPRS modem that provides authentication, encryption and tamper protection for the data sent over GPRS links.

TIME DISTANCE DIAGRAMS

The ***JSENT*** Time/Distance (T/D) diagrams are a powerful tool for optimizing a street's bandwidth. They allow interactive 'what if' adjustments which show the effects of timing changes on selected streets, including cross flows.



For more information contact:

Web: www.jsent.co.za

E-mail: info@jsent.co.za

Tel: +27-31-307-1064