



# SCADA

***JSENT** is the affordable, flexible, full-featured SCADA system that is suitable for a wide range of applications. It has been deployed in systems ranging from small boiler control systems to large traffic control centers that have more than 750,000 I/O points.*

*Standard in **JSENT** are modules that are extra cost options in competing products. Features like the SQL database, web server, report writer and SMS alarming are built in.*

*Due to the open standards approach taken with **JSENT**, it can be deployed on either Windows or Linux systems. Further evidence of the open nature of **JSENT** is that it can be configured to use either the bundled SQL server or an existing corporate server.*

*A team committed to providing outstanding support develops **JSENT**. Speak to us about your custom requirements as well as any other support questions you may have.*

**JSENT** has a long, and growing, list of features that are incorporated into the standard product. There are two main building blocks, a back-end server and HMI front-ends. These components may be present in the same computer or linked by a network.

**Multiple languages.** The system is easily translated into different languages so that each user is presented with messages in the language of their choice.

**Multiple operating systems.** *JSENT* can be deployed on Windows, Linux, and other operating systems.

**SQL Server.** *JSENT* is bundled with a very fast and reliable SQL data base. Other databases, MS-SQL for example, are supported. Data generated at run time, such as the event and alarm logs, the trend data, and report data is written to the database. This data is directly accessible from application programs such as MS Excel.

**Web server provides browser-based access to reports, documentation, easily customized database queries and 'servlets' for comprehensive access to *JSENT* from a standard browser.**

**FTP server and client for remote maintenance and to transfer backup and archive files over the network.**

**Scheduler.** Initiates actions scheduled by date and time. These could be automatic report creation, backups, archiving of historic data, and other actions.

**SMS messages can be sent to cell phones automatically when alarms or other events are detected. Manually entered messages can also be sent.**

**Mimic diagrams.** Mimics are created with an advanced diagram editor, with easy to apply features such as colour gradients, transparency, alignments, zoom and pan, library symbols, sub pictures and layers. Animations and user interactions are added with a simple right click.

**Alarm list viewers.** Lists can show global alarms or alarms associated with specific devices.

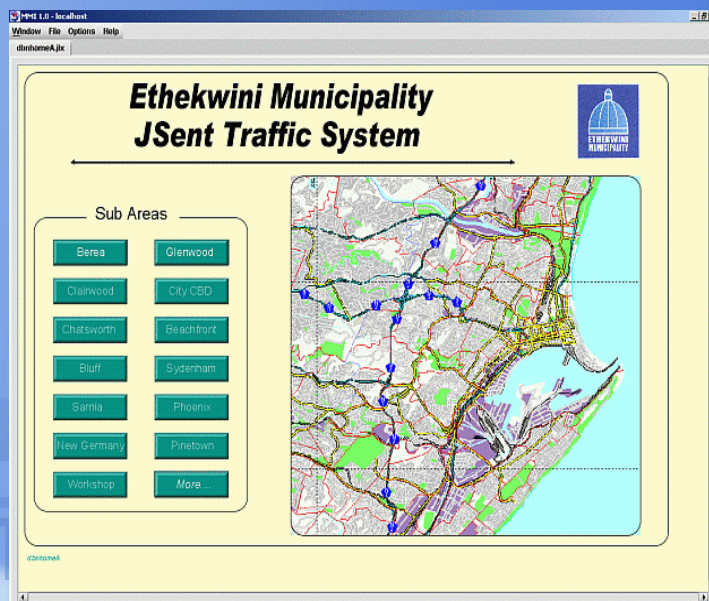
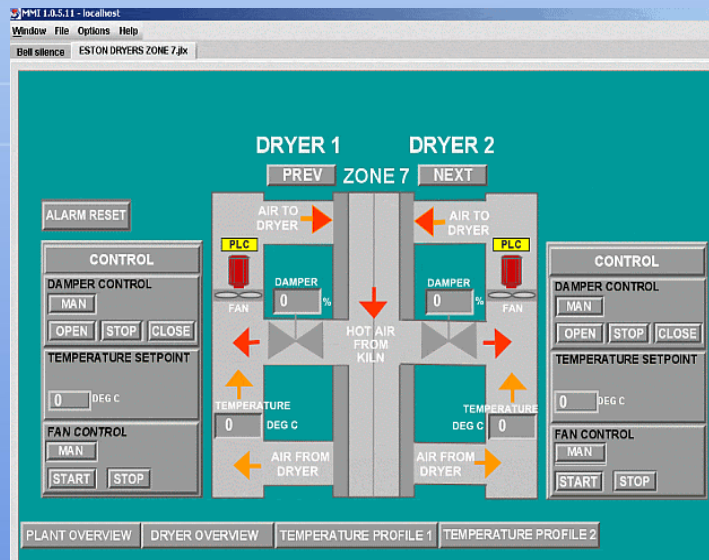
**Event list viewer.** Shows events and alarms as they occur when in dynamic mode. In historic mode filters precisely extract the desired information.

**Trends and charting.** Trend information is captured to the SQL database and can be displayed on the HMI in the form of charts. The user can easily drill down to view more detailed information.

**Reports.** HTML formatted reports are created from user defined templates and can be printed directly or viewed in any browser. The raw data for a report can be extracted from the current tag values or from the SQL database.

**Recipes.** Lists of recipes and their associated product parameters can be sent to a PLC automatically, manually or by the scheduler.

**Scripting.** *JSENT* can be extended by writing scripts. These can run as background tasks on the server, or they can extend the functions of the HMI mimics. Scripts are written and debugged with the built in development environment.



**For more information contact:**

**Web:** <http://jsent.co.za>  
**E-mail:** [info@jsent.co.za](mailto:info@jsent.co.za)  
**Telephone:** +27-31-307-1064